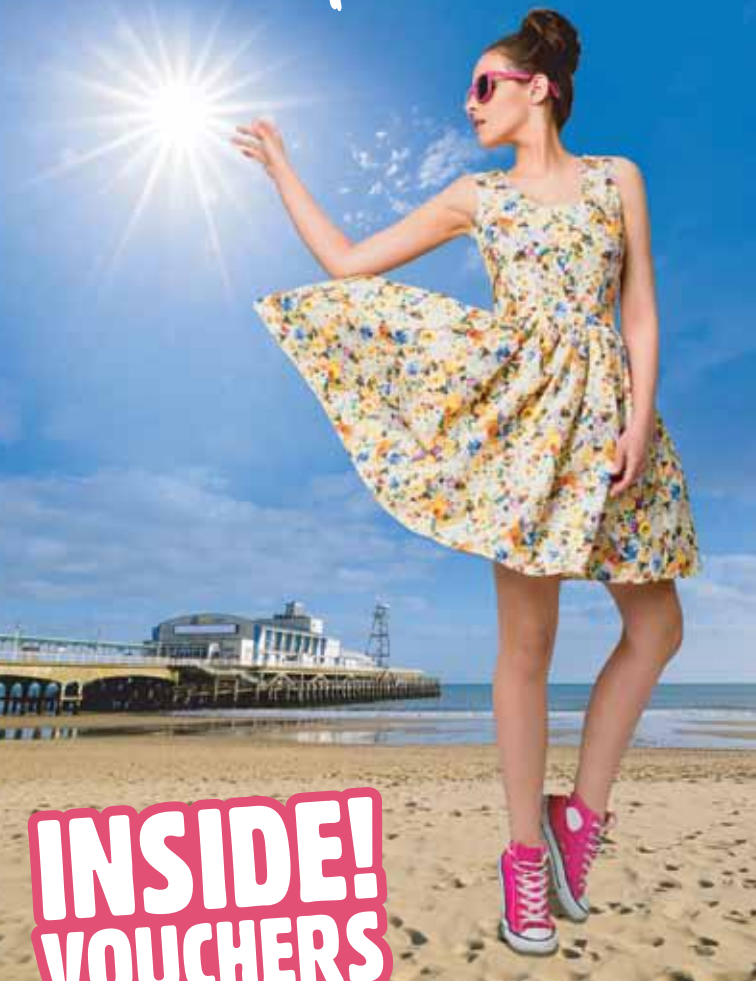


# Bournemouth **BLOOMING BEAUTIFUL** this Spring



**INSIDE!  
VOUCHERS**  
FOR LOCAL ATTRACTIONS

Plan your trip today.  
[bournemouth.co.uk/spring](http://bournemouth.co.uk/spring)

# Bournemouth

The premier destination this spring, blooming with the best entertainment, activities, food and events!

Turn to the back of this booklet to find vouchers so you can enjoy some of Bournemouth's best activities for less.

Please note all events and dates are provisional and subject to change.



# WIN

**BOURNEMOUTH VIP  
TWO NIGHT BREAK FOR TWO  
INCLUDING HOTEL, DINNER & ENTERTAINMENT**

**GET  
INVOLVED!**

 [bournemouth.co.uk/spring](http://bournemouth.co.uk/spring)

 [@colouryourlifeB](https://twitter.com/colouryourlifeB)

 [ColourYourLifeBournemouth](https://www.facebook.com/ColourYourLifeBournemouth)

# Where to stay

Bournemouth offers a wide range of hotels to suit every taste and pocket from four star spa luxury to traditional guest house bed and breakfast accommodation. Whether you're looking for a cosy room in a period property or a stylish space in a more modern setting, you're bound to find the ideal spot for a last-minute escape. You will find many options close to the beaches, with cliff-top locations offering breathtaking coastal views at any time of year. Others are nestled close to shops and restaurants, providing the perfect base for a weekend of retail therapy.



If you prefer the laidback holiday experience doing your own thing, Bournemouth has self-catering accommodation to suit all tastes and lifestyles. Venture a little further and you'll find plenty of outdoor options for camping or caravanning, taking in some of the south coast's most stunning locations!

[bournemouth.co.uk/where-to-stay](http://bournemouth.co.uk/where-to-stay)

# Cycling



Hiring a bike is a great way to explore the seven miles of golden sands along the seafront – you can even venture into Poole and out to the Sandbanks Peninsular and have a nose around one of the most expensive places to live in the UK. Or, head east and cycle out to Hengistbury Head. The prom is level, mostly traffic free and gives great views across to Old Harry and the Jurassic Coast, or the Needles and the Isle of Wight. Don't forget, you'll find a Two for One offer on bike hire at the back of this booklet!

[bournemouth.co.uk/cycling](http://bournemouth.co.uk/cycling)

Turn to back pages  
for special offers!



# Gardens

Bournemouth has long enjoyed a rich horticultural tradition and provides a great base for visiting the amazing, and diverse variety of well-known and privately owned gardens in the area. Passionate people and horticultural pioneers have lived and worked in the area since the mid-1800s and that tradition continues to the present day. The town won a Gold Medal and the President's Award at Chelsea in 2006, and a Silver Gilt Medal at the Hampton Court Flower Show in 2012. More recently it was awarded a Gold medal in the 2014 European Entente Florale.



Turn to back pages  
for special offers!



[bournemouth.co.uk/gardens](http://bournemouth.co.uk/gardens)



**Abbotsbury Subtropical Gardens**  
Recent winner of the HHA/Christie's Garden of the Year Award, described by Alan Titchmarsh as "One of the finest gardens I have ever visited".

01305 871387 Abbotsbury, DT3 4LA  
[www.abbotsburygardens.co.uk](http://www.abbotsburygardens.co.uk)



**Kingston Lacy - National Trust**  
Spectacular arrays of daffodils and camellias, tulips and bluebells. Discover the Lime Avenue, Camellias Walk, and the restored kitchen garden.

01202 883402 Wimborne, BH21 4EA  
[www.nationaltrust.org.uk/kingston-lacy](http://www.nationaltrust.org.uk/kingston-lacy)

**Athelhampton House and Gardens**

One of England's finest 15th century manor houses. Stunning grade 1 listed gardens with world famous topiary pyramids.

01305 848363 Athelhampton, DT2 7LG  
[www.athelhampton.co.uk](http://www.athelhampton.co.uk)



**Kingston Maurward Gardens**

The Gardens are grade II listed and tended with help from students on Horticulture courses. Don't miss the walled garden and Animal Park.

01305 215003 Dorchester, DT2 8PY  
[www.kmc.ac.uk](http://www.kmc.ac.uk)



**Bournemouth Parks and Gardens**

Green Flag winners since 1999, the Grade II listed Lower, Central and Upper Gardens are 3km long providing a lovely range of scenery and activities.

01202 451629 Bournemouth,  
[www.bournemouth.co.uk/gardens](http://www.bournemouth.co.uk/gardens)



**Knoll Gardens**

Internationally recognised, secluded, naturalistic garden & award-winning nursery, home to the UK's leading ornamental grass specialist.

01202 873931 Wimborne, BH21 7ND  
[www.knollgardens.co.uk](http://www.knollgardens.co.uk)

**Compton Acres**

Constructed in 1920 by Mr Thomas Simpson, today, Compton Acres is still acknowledged as one of the finest privately owned gardens in England.

01202 700778 Poole, BH13 7ES  
[www.comptonacres.co.uk](http://www.comptonacres.co.uk)



**Larmer Tree Gardens**

Larmer Tree is an extraordinary example of Victorian extravagance. Recognised by English Heritage as a Garden of National Importance.

01725 516971 Salisbury, SP5 5PT  
[www.larmertree.co.uk](http://www.larmertree.co.uk)



**Exbury Gardens**

The Gardens are a spectacular 200 acres, world-famous for Rothschild Collection of rhododendrons, azaleas, camellias and rare trees and shrubs.

023 8089 1203 Exbury, SO45 1AZ  
[www.exbury.co.uk](http://www.exbury.co.uk)



**Minterne**

Famed for rhododendrons, azaleas, Japanese cherries and magnolias in April and May. Described by Simon Jenkins as a 'corner of paradise.'

01300 341370 Minterne Magna, DT2 7AU  
[www.minterne.co.uk](http://www.minterne.co.uk)

**Hengistbury Head Nature Reserve**

The headland and harbour are internationally important sites for wildlife and archaeological remains, find out more at the visitors centre.

01202 451618 Bournemouth, BH6 4EN  
[www.visithengistburyhead.co.uk](http://www.visithengistburyhead.co.uk)



**Sir Harold Hillier Gardens**

World famous for holding the largest collection of hardy trees & shrubs in the world. The Gardens is renowned for its collection of rare plants set in 180 acres.

01794 369317 Romsey, SO51 0QA  
[www.hilliergardens.org.uk](http://www.hilliergardens.org.uk)



Turn to back pages  
for special offers!

# Adventure

Try a taste of adventure this spring and do something different. The **Pier Zip Line** is the first pier to shore zip wire experience in the world, giving an exhilarating 'zip surf' over the waves to the beach. Also located on Bournemouth Pier, the all-new **RockReef Adventure Activity Centre** features a wide variety of fun climbing challenges, the Pier Cave adventure, plus the HighLine aerial obstacle course.

For outdoor aerial adventure head to **Altitude High Ropes Adventure** course at Littledown, featuring the Power Fan Descender, Zip Wire and Climbing Walls at 5m and 10m heights.



Turn to back pages  
for special offers!



Climb aboard one of the classic ferries from **Tuckton Tea Gardens** and take a trip down the river Stour to Christchurch Harbour. Views of Christchurch Priory and the local wildlife will not disappoint. On your return why not have a round on the putting greens, or simply take a seat in the beautiful gardens with views down the river to the Priory.



Meet the newest residents at **Bournemouth Oceanarium**, a colony of 10 playful penguins. Take an underwater journey and discover hundreds of amazing creatures from sharks, crocodiles and piranhas to clownfish, turtles and otters.

Be enchanted with a spectacular panoramic view for up to 20 miles as you take to the sky aboard **The Bournemouth Balloon**. Let your imagination soar!

Let the Bournemouth **City Sightseeing Bus** take you on a more sedate adventure. Hop on and off at as many of the stops on the route as you wish, and see all the best sights that Bournemouth has to offer.

[bournemouth.co.uk/things-to-do](http://bournemouth.co.uk/things-to-do)



# Walking

Nestled between the bustling town centre and award winning beach, there's always a reason and a season to take a relaxing walk through Bournemouth's beautiful Grade II listed Victorian Gardens. The Lower, Central and Upper Gardens offer an oasis of colour and are absolutely stunning in the Spring time.

Bournemouth is just across the bay from Britain's only natural World Heritage site. There are some amazing walks along the cliffs from Old Harry Rocks, through Swanage and along the South West Coastal Path.

## Jurassic Jaunts

Enjoy the best England's first natural World Heritage site covering 95 miles of spectacular coastline, displaying 185 million years' of the Earth's history. Downloadable self-guided walks, guided walks and local car tours.

[www.jurassicjaunts.co.uk](http://www.jurassicjaunts.co.uk)

## New Forest

Explore heathland, ancient woodland, wetlands and grassy plains, with walks amongst coniferous and deciduous trees in the New Forest National Park.

Downloadable self-guided walks:

[www3.hants.gov.uk/new-forest-walks.htm](http://www3.hants.gov.uk/new-forest-walks.htm)

## Bournemouth Guided Walking Tours

Discover the history of this vibrant town. An easy walk for 1¼ hours, covering one mile. Every Tues and Thurs, 11am, May to end Nov 2016. £3 per person. No need to book. 01202 709965 / 07801 061513.

[www.bournemouthguidedwalkingtours.co.uk](http://www.bournemouthguidedwalkingtours.co.uk)

## WalkingTalks with Hattie Miles

Former Daily Echo photographer Hattie Miles runs a series of circular guided walks. Sample the town's fascinating literary past, its romantic heritage and much more.

Usually £6 per person

[walkingtalks.wordpress.com](http://walkingtalks.wordpress.com)

## Walking Picnics

Regular programme of guided walks with home-made picnics in the New Forest. Twice a week (usually on Tuesdays and Saturdays, except where there is a Bank Holiday) from April through to the end of September.

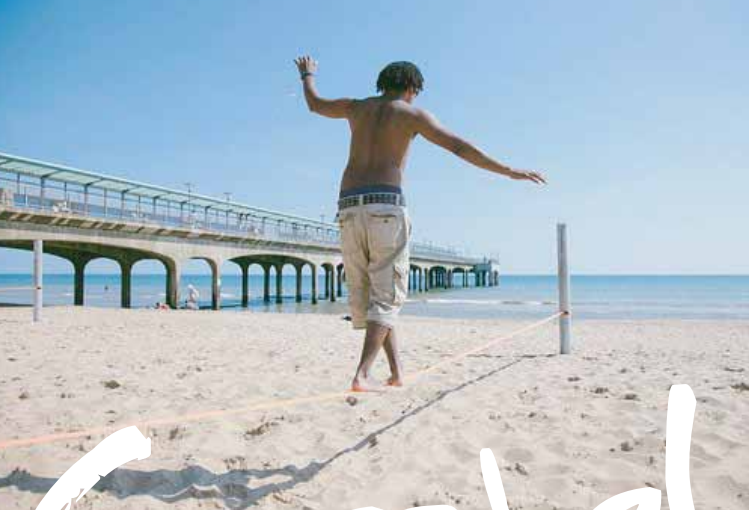
01425 655511 or 0787 669 4052.

[www.walkingpicnics.co.uk](http://www.walkingpicnics.co.uk)

Turn to back pages  
for special offers!

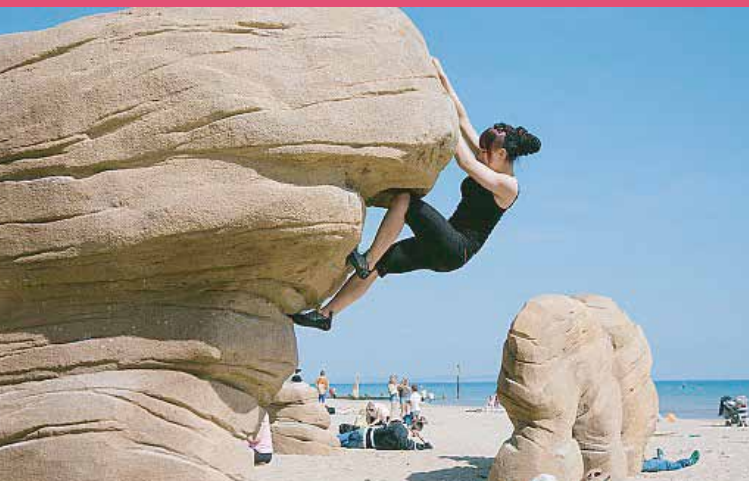
[bournemouth.co.uk/walking](http://bournemouth.co.uk/walking)





# Coastal Activity Park

Make the most of the beach that stretches over 1km either side of Boscombe Pier at the Coastal Activity Park. With a huge variety of activities on offer such as beach volleyball, bouldering, surfing, kayaking, beach tennis, beach fitness, slacklining and even Salty Dog Triathlons, there's something for all ages and abilities.



[coastalactivitypark.co.uk](http://coastalactivitypark.co.uk)

# Thundercat Racing



**Saturday 16 - Sunday 17 April**

The curling waves of Bournemouth's surf will become the playground once again for the British ThunderCat Racing Tour. Over 20 teams will compete around a tight spectator friendly course just a stone's throw away from Bournemouth Pier, with the full commentary and interactive displays you're sure to be given a fun jaw dropping weekend!

**[thundercatracing.com](http://thundercatracing.com)**



# Jazz Festival



**Friday 22 - Sunday 24 April**

Free jazz sessions on stage in the town centre. Brand new jazz village with food & drink on offer. Themed jazz events in hotels, bars and restaurants. Dozens of locations, streets, shops and arcades. World jazz jamboree event and air saxophone competition.

**[bournemouthjazzfestival.co.uk](http://bournemouthjazzfestival.co.uk)**



# Wheels Festival

**Friday 3 - Sunday 5 June**

Wheels will be rolling back into town for its third year. See non-stop, high speed action along the Demo Straight, monster metal crushing madness, gravity defying quad bike jumps and breathtaking BMX and skateboard tricks.



**[bournemouthwheels.co.uk](http://bournemouthwheels.co.uk)**



# POOLE HARBOUR BOAT SHOW

**Fri 20 - Sun 22 May**

With stunning views of Brownsea Island, and in close proximity to lively cafes, bars and restaurants, Poole Quay boat haven is perfectly placed to host this prestigious show. In addition to everything nautical the event will also feature a range of family entertainment, a music stage and a fireworks display.

[pooleharbourboatshow.co.uk](http://pooleharbourboatshow.co.uk)



# FOOD AND DRINK FESTIVAL

**Friday 17 - Sunday 26 June**

The Bournemouth Food and Drink Festival is a 10 day food event celebrating cuisines from across the world. From Mexican to Italian, Spanish to Thai, there's something here to tempt any tastebuds! The main hub is in Bournemouth Square where you will find many stalls as well as a farmers market and demonstration events. Plus sit back and chill out as you enjoy an array of musical talent that will be on the stage in the Festival hub.

[bournemouthfoodanddrink.co.uk](http://bournemouthfoodanddrink.co.uk)



# AIR FESTIVAL

**Thursday 18 - Sunday 21 August**

This summer the skies of Bournemouth are set again to host some of the world's best military and civilian aviation display teams and a huge off shore naval presence. When the sun goes down, Night Air entertainment will light up the skies with night flying illuminated by pyrotechnics. Winner of the prestigious Gold Award in the VisitEngland Awards for Excellence 2015, it's truly a world class event.

[bournemouthair.co.uk](http://bournemouthair.co.uk)



# SHAKE & STIR VINTAGE FESTIVAL

**Fri 1 - Sun 3 July**

Live music, entertainment and events over the entire weekend in from Southbourne Green to Fishermans Walk. With events also held in Cliff House Hotel, Ludo Lounge and The Grove Tavern each evening as well as vintage make-overs fashion and food and drink during the day.

[southbournefestival.co.uk](http://southbournefestival.co.uk)

# Evenings

Whether it's fine dining, award-winning shows, live music, cosy pubs or cocktails, Bournemouth will tempt you with evening entertainment and delicious food. Throughout the town there are a myriad of restaurants, cutting edge bars and drinking cubby holes to suit everyone. Walk in either direction from the iconic Bournemouth Pier to reach sublime spots for food and drink with a view.



There's an incredible line up of shows across Bournemouth this spring from hilarious comedians to amazing live music; and mesmerising contemporary dance to family favourite musicals. There really is something for everyone. For listings and tickets visit:

**Bournemouth International Centre (BIC)**  
**Bournemouth Pavilion**  
[www.bhlivetickets.co.uk](http://www.bhlivetickets.co.uk)

**O2 Academy Boscombe**  
[academymusicgroup.com/o2academybournemouth](http://academymusicgroup.com/o2academybournemouth)

**Pavilion Dance South West**  
[www.pdsw.org.uk](http://www.pdsw.org.uk)



**PIERZIP**  
**2 FOR £26**

Terms apply, see over.



**FRONT BIKE HIRE**  
**2 FOR 1**

Terms apply, see over.



**KNOLL GARDENS**  
**2 FOR 1**

Terms apply, see over.



**HARRY RAMSDEN'S**  
**20% OFF**

Terms apply, see over.



**JURASSIC JAUNTS**  
**10% OFF**

Terms apply, see over.

## PIER ZIP

01202 983983. Bournemouth Pier, BH2 5AA

[www.rockreef.co.uk](http://www.rockreef.co.uk)

Two people ride together for £26! Only available for two people booking and riding at the same time. Valid 14 March to 30 June 2016. Excludes Bank Holidays and Wheels Festival dates. Cannot be used in conjunction with any other offer. Restrictions apply - see website.



# WALKING PICNICS £2 OFF PP

Terms apply, see over.

## FRONT BIKE HIRE

01202 373280. Bournemouth BH2 5AA

[www.frontbikerelease.co.uk](http://www.frontbikerelease.co.uk)

Two for the price of one, on full day bike hire, lower price free.  
Valid 14 March to 30 June 2016. Excludes Bank Holidays and Wheels Festival dates. Cannot be used in conjunction with any other offer.



# ALTITUDE £5 OFF PP

Terms apply, see over.

## KNOLL GARDENS

01202 873931. Wimborne, BH21 7ND

[www.knollgardens.co.uk](http://www.knollgardens.co.uk)

Maximum two visitors (one full paying adult or senior with the lower priced ticket free) may be used for one visit only. Valid 14 March to 30 June 2016. Excludes Bank Holidays. Cannot be used in conjunction with any other offer.



# TREHANE NURSERY 20% OFF

Terms apply, see over.

## ROCK REEF

01202 983983. Bournemouth Pier, BH2 5AA

[www.rockreef.co.uk](http://www.rockreef.co.uk)

15% discount per person on the standard admission rate.  
Valid 14 March to 30 June 2016. Excludes Bank Holidays and Wheels Festival dates. Cannot be used in conjunction with any other offer.



# CITY SIGHTSEEING BUS 2 FOR 1

Terms apply, see over.

## HARRY RAMSDEN'S

01202 295818. Undercliff Drive, Bournemouth BH1 2EZ

[harryramsdens.co.uk](http://harryramsdens.co.uk)

20% discount off the bill for parties up to 6 people.  
Valid Mon-Fri, 14 March to 30 June 2016. Excludes Bank Holidays and Wheels Festival dates. Cannot be used in conjunction with any other offer.



# KINGS PARK NURSERY 10% OFF

Terms apply, see over.

## JURASSIC JAUNTS

07790 474478. [enquiry@jurassicjaunts.co.uk](mailto:enquiry@jurassicjaunts.co.uk)

[www.jurassicjaunts.co.uk](http://www.jurassicjaunts.co.uk)

20% discount off all tours, 4 people: £90 half day / £170 full day.  
Valid 14 March to 30 June 2016. Excludes Bank Holidays. Cannot be used in conjunction with any other offer.



# URBAN REEF £4 COFFEE & CAKE

Terms apply, see over.

## WALKING PICNICS

01425 655511 or 07876 694052.

[www.walkingpicnics.co.uk](http://www.walkingpicnics.co.uk)

£2 off per person, full price £16 per person.

Valid 14 March to 30 June 2016. Excludes Bank Holidays.  
Cannot be used in conjunction with any other offer.

## ALTITUDE HIGH ROPES ADVENTURE

01202 055500. Littledown Centre, Bournemouth BH7 7DX.

[www.altitudehighropes.com](http://www.altitudehighropes.com)

£5 off 'Ultimate Adventure Package' per person. Valid when pre-booked for two people up to the day before, for 2.30pm and 4pm sessions only. Payment at time of booking, no refunds or exchange. Valid 25 March to 26 June. Excludes Bank Holidays and Wheels Festival dates. Cannot be used in conjunction with any other offer.

## TREHANE NURSERY

01202 873490. Wimborne, BH21 7ND.

[www.trehane.co.uk](http://www.trehane.co.uk)

20% off plants, one transaction only, full priced items only, not valid for mail order.  
Valid 14 March to 30 June 2016. Excludes Bank Holidays.  
Cannot be used in conjunction with any other offer.

## CITY SIGHTSEEING BUS

01202 557007. For stop locations visit:

[citysightseeing-bournemouth.co.uk](http://citysightseeing-bournemouth.co.uk)

Two for the price of one, on 24 hour bus pass. Not valid on Bus and Boat tickets.  
Valid 14 March to 30 June 2016. Excludes Bank Holidays and Wheels Festival dates. Cannot be used in conjunction with any other offer.

## KINGS PARK NURSERY

01202 427851. Kings Park Drive, Bournemouth BH7 6LR.

[www.bournemouth.gov.uk/nursery](http://www.bournemouth.gov.uk/nursery)

Spend over £20 and receive 10% discount on selected plants.

Open Wednesday to Sunday, 10am-4pm (plus bank holidays) Valid from 9 April to 30 June 2016. One transaction only, not valid in conjunction with any other offer.

## URBAN REEF

01202 443960. Undercliff Drive, Boscombe BH5 1BN

[www.urbanreef.co.uk](http://www.urbanreef.co.uk)

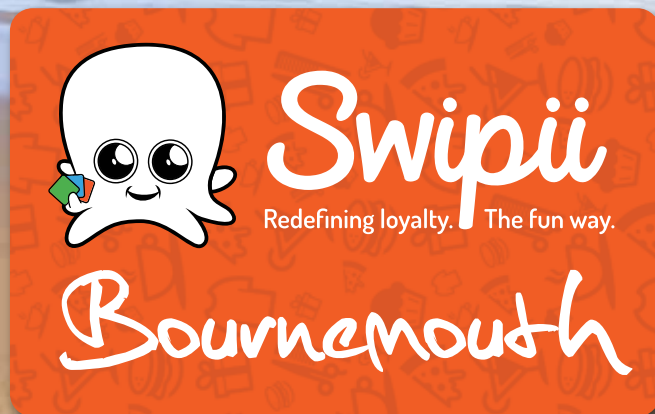
Coffee and cake just £4, subject to availability.

Valid 14 March to 30 June 2016. Excludes Bank Holidays and Wheels Festival dates. Cannot be used in conjunction with any other offer.

# WHAT ARE YOU WAITING FOR?

Plan your trip today!

With your free Swipii loyalty card you can collect rewards across Bournemouth when you book accomodation, on eating out, and at local shops and cafes. Visit [swipii.com/locations](http://swipii.com/locations) to discover who's in!



One card does it all, download the app and start collecting rewards today!

# Bournemouth

## SIZZLING HOT EVENTS



**ThunderCat Sea Racing** 16 - 17 April

**Jazz Festival** 22 - 24 April

**Bournemouth Rugby 7s** 27 - 29 May

**Wheels Festival** 3 - 5 June

**Food and Drink Festival** 17 - 26 June

**Shake & Stir Vintage Festival** 1 - 3 July

**Bourne Free Pride Festival** 8 - 10 July

**British Beach Soccer** 28 - 31 July

**BSO Proms in the Park** 5 - 7 August

**Air Festival** 18 - 21 August

**P1 Grand Prix of the Sea** 3 - 4 Sept

**International Triathlon** 11 Sept

**Marathon Festival** 1 - 2 Oct

**Arts by the Sea Festival** 8 - 15 Oct

**BOURNEMOUTH.CO.UK**

Please note all events and dates are provisional and subject to change